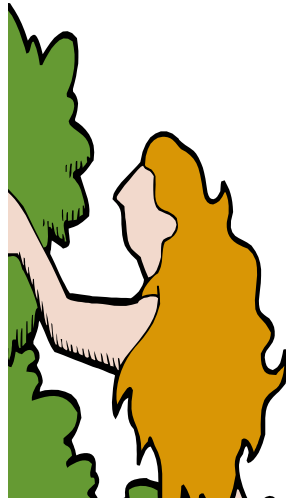


**HOW  
Can We  
Help Each Other?  
Part 3**



*God Made  
a  
HELP MEET  
FOR ADAM*

***OUR DAILY BREAD***

***Junior Edition***

***3-29-09***



## **SOMETHING YOU MUST KNOW:**

God is perfect. He is Holy. We are all sinners. *For all have sinned, and come short of the glory of God.*

(Romans 3:23a KJB)

None of us could ever make ourselves perfect or holy to be accepted by God. But God loves us all so much, that He gave His only Son, the Lord Jesus Christ, to go to the cross and pay the penalty for our sins IN FULL, ONCE and FOR ALL. Jesus died and rose again. Because of the Lord Jesus Christ, God can now make us holy and acceptable to Himself. *For Christ also hath once suffered for sins, the just for the unjust, that he might bring us to God, being put to death in the flesh, but quickened by the Spirit.* (1 Peter 3:18 KJB)

Jesus Christ is our ONLY WAY to God and heaven.

*Jesus saith unto him, I am the way, the truth, and the life, no man cometh unto the Father, but by me.*

(John 14:6 KJB)

*Believe on the Lord Jesus Christ, and thou shalt be saved.* (Acts 16:31 KJB)

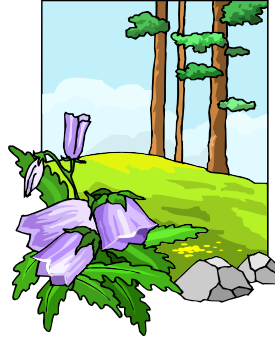
Without Jesus Christ, you can NEVER be accepted by God or go to heaven. When you believe in Jesus Christ as your Savior, God makes you His child. When you leave this world, you will spend all of eternity with Him! *But as many as received him to them gave he power to become the sons of God, even to them that believe on his name.* (John 1:12 KJB) While you are still here on earth, learn His beautiful Word. Believe it and obey it, so you can enjoy all God has done for you.

*Let the word of Christ dwell in you richly in all wisdom.*

(Colossians 3:16a KJB)

Did you know that  
**THE LORD LOVES**  
To plant?

The Valleys, mountains & fields  
all over this world are filled with  
trees & wildflowers which came  
from the very **FIRST** trees & flow-  
ers which God created & caused to  
grow **IN THE BEGINNING!** All these beautiful  
trees & flowers show us that God is the **BEST**  
**PLANTER** there is!



In fact, it was the Lord who **PLANTED** the  
**VERY FIRST GARDEN** filled with beautiful & ex-  
tremely useful, necessary trees & a river in the place  
called Eden. We learned about that in last week's lesson  
too when we read scriptures from the Book of  
Genesis—the **BOOK OF FIRST THINGS, THE BOOK OF**  
**BEGINNINGS!** In last week's lesson, we also  
learned that there is another kind of **GARDEN** that  
**THE LORD LOVE** To plant!

Do you remember what that kind of garden was?  
God **LOVES** to plant a garden in your **SOUL!** Did  
you read Matthew 13:18-31 as we suggested in last week's  
lesson? If not, read it right now & you will see the kind of  
garden the Lord wants to plant in your soul—your thinking.  
The Lord uses the **WORD PICTURE OF** all types of  
**GARDEN SOIL** to help you picture what He wants  
to do in your life. Of course it is not a garden of  
flowers that God wants to grow in your soul, it is a  
garden filled with **HIS WORD—HIS VIEW-**  
**POINT—HIS WAY OF THINKING!** God's

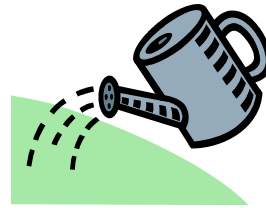
WORD is the SEED which God wants to plant in your soul. His WORD is also the WATER for the SEED along with His HOLY SPIRIT which is the POWER that causes the GROWTH of that garden.

So, if God's Word is the



**seed & the water,**

which God uses to plant His VIEWPOINT—HIS WAY OF THINKING - in your soul, what are



the trees & flowers & the fruit that will grow from the seeds of His Word which you KEEP & HIDE & PROTECT & GUARD in your soul,? (And by the way, those underlined words are all the DEFINITIONS that we learned last week for certain words in Genesis 2. These words are going to help us learn WHY the 1st man needed HELP in the GARDEN of EDEN.) Well, lets read some scriptures that will HELP us answer this question!

What are the trees & flowers & the fruit that will grow from the seeds of God's Word which you KEEP & HIDE & PROTECT & GUARD in your soul,?

As you read, notice the underlined words.

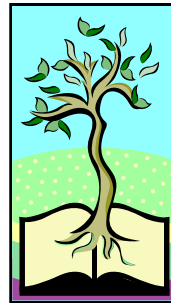
"Blessed *is* the man that trusteth in the LORD, and whose hope the LORD is.

For he shall be as a tree planted by the waters, and *that* spreadeth out her roots by the river, and shall not see when heat cometh, but her leaf shall be green; and shall not be careful in the year of drought, neither shall cease from yielding fruit."

Jeremiah 17:7-8 KJB

What does this scripture say that the man who TRUSTETH IN THE LORD will be like? (By the way, even if you are JUST BEGINNING to fill your soul with God's Word, even if you have only ONE OR TWO seeds of His Word planted in your soul at this time, but You are KEEPING, PROTECTING, GUARDING those parts of His Word in your soul & TRUSTING IN THE Lord for what He promised in those parts of His Word, then the answer to that question will be TRUE about YOU TOO concerning those parts of His Word!) Again, what will the man who TRUSTETH IN THE LORD be like? Fill in the blanks using the underlined words from the scripture to see the answer.

"For he shall be as a t \_ \_ \_  
planted by the w \_ \_ \_ e \_ s, and  
*that* spreadeth out her roots by the  
river,"



God's Word planted in our soul will make us like a TREE that is PLANTED by the WATER. We'll be like a TREE that has LONG, HEALTHY, STRONG ROOTS. Our roots will go deep into the WORD OF GOD! That will make us STRONG! And just like that tree that the Lord tells us about in Jeremiah 17 which is planted by the water & has roots by the river will STAY GREEN & NOT get all dried up when it is REALLY HOT & there is NO RAIN because that river will give it all the water it needs, we'll STAY STRONG when life gets REAL HOT WITH PROBLEMS & things we want or need are not that easy to get.

Instead of FALLING APART, God's Word planted

deep in our souls will KEEP US SAFE & STRONG!

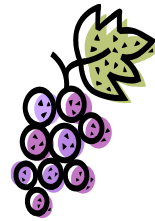
Now that is one plant that God wants to grow in our life. He wants to make us like that strong green tree by the water of His Word. What about fruit & flowers in the garden of our soul?

What are those a picture of? Of course God is NOT going to grow oranges & apples in our souls! Certainly NOT! However, as we KEEP God's Word in our soul & obey it, God will use what is on the INSIDE of our soul—His Word—to show something wonderful (really Someone wonderful. Can you guess who?) on the OUTSIDE of us in the way we treat others & the way we act when trouble comes our way. Instead of doing things the way the world or our own feelings tell us to do things, the FRUIT will be all the ways we think, speak & act like Jesus toward ourselves & others! Galatians 5:22-23 tells us what this FRUIT is:

"But the fruit of the Spirit is love, joy, peace, longsuffering, gentleness, goodness, faith,

Meekness (willing to quietly & humbly obey God), temperance (being able to say no when tempted.): against such there is no law."

Can you see WHY God LOVES to plant that GARDEN OF HIS WORD in your soul? Imagine how HELPFUL to others we become as God's Holy Spirit makes us more & more like Jesus—more loving, more full of joy & peace, more patient (that's longsuf-



fering), to have faith & be meek & temperate. (And remember, fruit takes a LONG TIME TO GROW! We should thank God that He is VERY LONGSUFFERING with us as He works in the GARDEN of our soul to make us more like Jesus. And, becoming more like Jesus in all these ways is the MAIN WAY we can HELP OTHERS which, by the way, brings us back to the MAIN question that we are now SEARCHING OUR KING JAMES BIBLE to answer:

**What are different ways we can help each other?**

That question has brought us to the very 1st book in our King James Bible—the Book of Genesis & the very 1st place the word HELP is found in the Bible. In our last 2 lessons, we learned that after God created the 1st man, Adam, God planted a garden in the place called Eden. God put the man into that garden & gave the man instructions about how to KEEP that garden. Remember the words GARDEN & KEEP both referred to PROTECTING & GUARDING that garden.

Here were the Lord's instructions to the man:

Genesis 2:16-17

"And the LORD God commanded the man saying, Of every tree of the garden thou mayest freely eat:

But of the tree of the knowledge of good and evil, thou shalt not eat of it: for in the day that thou eatest thereof thou shalt surely die."

And then, as soon as God gave the man these commands or instructions, read what God said next:

"And the LORD God said, *It is* not good that the



man should be alone;" Genesis 12:18a KJB

Right after God gave the man His WORD—  
HIS INSTRUCTIONS, HIS COMMANDS  
about how the man was to keep or protect  
the garden, God said this: "It is not good  
that the man should be alone."



And then the LORD God said this:  
I will make an help meet for him."

Genesis 12:18b KJB

And so we now see that God said that it was the 1st man Adam who should have HELP in the garden. Do you know what that word "help meet" means? That word HELP right there in Genesis 2:18 means "to aid". However, that word HELP right there in Genesis 2:18 comes from another word which means "TO SURROUND, TO PROTECT, TO AID". Oh my! Here we go again! Do you remember the meaning of the words GARDEN & KEEP from last week's lesson? Both those words have similar meanings. They both refer in some way to fencing or hedging something in or PROTECTING, DEFENDING, or GUARDING. Boy, God sure was concerned about PROTECTION in that beautiful garden! He wanted the garden to be protected and then, God wanted that 1st man Adam to be HELPED, SURROUNDED, PROTECTED, AIDED in some way!

And WHY did God say that Adam should have HELP? Let's READ! God said that He would make an help meet for that 1st man because God said:

"It is not good that the man should be alone."



Now that statement should lead us to wonder  
2 things:

1. WHY “it is not good that man should be alone”.  
and

2. WHOM did God make to HELP that man?

(Remember, it is GOOD to ask questions when you read & then look for answers as you continue to read. While you read & study your bible with the heart to want His truth & the desire to obey Him, ask the Lord to help you find HIS answers to your questions. Sometimes His answers may not come IMMEDIATELY, but as you continue to read & study, God will eventually show you HIS answers. Just as the Lord is PATIENT with us, WE must be PATIENT & WAIT for the Lord too. He’s always working to give us what we need at the BEST TIME & IN THE BEST WAY!)

Now we will look at God’s answer to question 2. Right now read Genesis 2:19-20. You will see there that God said that none of the animals or birds which God formed out of the ground were a suitable HELP MEET for that 1st man Adam. After all, animals CAN help with physical work in a garden & CAN be very good company, but when it comes to THINKING or UNDERSTANDING or PROTECTING or GUARDING INSTRUCTIONS, animals CANNOT help man!

And remember, it was RIGHT AFTER God gave INSTRUCTIONS about KEEPING (guarding, protecting) the garden that God said Adam needed

HELP! So whom did God make to help Adam with this important job? “And the rib, which the LORD God had taken from the man made he a woman, and brought her unto the man.” Genesis 2:22 KJB



# GRACE CHRISTIAN FELLOWSHIP

Pastor John A. Ricci

## Sunday Morning Service

10:00 A.M.

Sunday Transportation Service ~ Call 24 hours Prior

## Weekly Services

Wednesday & Friday Evenings, 7:30 P.M.

## Prayer Meeting

Wednesday & Friday Evenings, 7:00-7:20 P.M.

## Communion Service

First Sunday of Every Month

## Children's Prep School (Ages 5-14) & Mother's Room

Available for Every Service

## Email

info@gracecfellowship.org

## Directions

### From I-95

- RI Exit #22; *Left* at split to **Rt. 6 W.**
- Take Killingly St (Rt. 128) Exit; *Right* off Exit.
- Take Killingly to end; *Right* on Manton Ave; cross bridge.
- Turn *Left* at light (CVS on corner), and then bear *Left* at the split. You are now on Woonasquatucket Ave.
- Go about 1 mi.
- **G.C.F.** is on the *Left*.

### From Rt. 146

- Mineral Spring Ave Exit in Providence.
- From **146 N** turn *Left* off Exit; from **146 S** turn *Right*.
- Take Mineral Spring to end and stay *Left* around the rotary (pass North Providence Town Hall).
- Take next *Right* onto Woonasquatucket Ave.
- Go about 1½ mi.
- **G.C.F.** is on the *Right*.



## Grace Christian Fellowship

232 Woonasquatucket Avenue, North Providence, RI 02911  
Tel 401.233.9671 • Fax 401.223.1292 • [www.GraceCFellowship.org](http://www.GraceCFellowship.org)