

# HOW Can We Help Each Other?

## Part 2

*Who Needed Help  
in the  
Garden of Eden?*



**OUR DAILY BREAD**

Junior Edition

3-22-09



## **SOMETHING YOU MUST KNOW:**

God is perfect. He is Holy. We are all sinners. *For all have sinned, and come short of the glory of God.*

(Romans 3:23a KJB)

None of us could ever make ourselves perfect or holy to be accepted by God. But God loves us all so much, that He gave His only Son, the Lord Jesus Christ, to go to the cross and pay the penalty for our sins IN FULL, ONCE and FOR ALL. Jesus died and rose again. Because of the Lord Jesus Christ, God can now make us holy and acceptable to Himself. *For Christ also hath once suffered for sins, the just for the unjust, that he might bring us to God, being put to death in the flesh, but quickened by the Spirit.* (1 Peter 3:18 KJB)

Jesus Christ is our ONLY WAY to God and heaven.

*Jesus saith unto him, I am the way, the truth, and the life, no man cometh unto the Father, but by me.*

(John 14:6 KJB)

*Believe on the Lord Jesus Christ, and thou shalt be saved.* (Acts 16:31 KJB)

Without Jesus Christ, you can NEVER be accepted by God or go to heaven. When you believe in Jesus Christ as your Savior, God makes you His child. When you leave this world, you will spend all of eternity with Him! *But as many as received him to them gave he power to become the sons of God, even to them that believe on his name.* (John 1:12 KJB) While you are still here on earth, learn His beautiful Word. Believe it and obey it, so you can enjoy all God has done for you.

*Let the word of Christ dwell in you richly in all wisdom.*

(Colossians 3:16a KJB)

Today we will continue with answering one of the questions a student asked during one of our classes here at Grace Christian Fellowship church. Here is the question: **What are different ways we can help each other?**

That question has brought us to the very 1st book in our King James Bible—the Book of Genesis.

**Can you guess what the word GENESIS means?**

HINT: It is the FIRST book in the bible.  
It is located at the BEGINNING of the bible.



Unscramble the letters in the words below. Then fill in the blanks by putting the letters in the correct spot. Those words will tell you what the word GENESIS means!

STFIR            NBNEGIGNI

GENESIS means f \_ r \_ \_

GENESIS means \_ e \_ \_ nn \_ n g.

Did you figure it out? Genesis is the book that tells us about BEGINNINGS—like the BEGINNING of the heavens & earth. Genesis is the book that tells us about things that came FIRST—like the FIRST MAN & WOMAN. In fact, the very FIRST scripture in the entire bible says this:

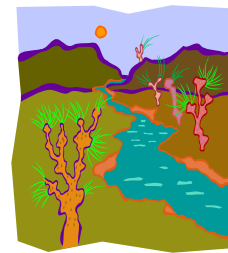
“In the beginning God created the heaven and the earth.”

Genesis 1:1 KJB

Now here is a **CHALLENGE**: Over the next few weeks, take

some time to read the book of Genesis. As you read it, write down all the things that tell about BEGINNINGS—things that God did for the FIRST time or IN THE BEGINNING! You'll have quite a LONG LIST! And one thing that should be near the BEGINNING of your list will be the word "HELP". Why? Because, along with the record of the BEGINNING of the human race when God CREATED the FIRST man, Adam, we also find the very FIRST mention of the word HELP in that book of Genesis.

Last week we learned that IN THE BEGINNING, after God had created the FIRST man, Adam, God also "planted a garden eastward in Eden; and there he put the man whom he had formed."



Genesis 2:8 KJB

We learned that God did ALL THE WORK NEEDED to plant that garden. We learned that God SUPPLIED ALL that was needed for that garden to grow—sun, water from the river which He allowed to flow into it. We learned that from the special trees which GOD PLANTED in that garden, GOD SUPPLIED ALL that the first man needed for his PHYSICAL NEEDS—trees for FOOD & trees PLEASANT to the sight. In that garden, God also supplied all that the first man needed to enjoy a close & loving relationship with the Lord who created him! We also learned that there were 2 other trees which God made to grow out of the ground of that garden—the tree of life and the tree of knowledge of good and evil. So God put the man into the garden to DRESS & KEEP that garden & to spend TIME TALKING WITH GOD in that garden. Finally we learned that those words DRESS & KEEP meant that the 1st man was to turn the soil as well as KEEP which means he was to hedge about or PROTECT or attend or WATCH CAREFULLY over that garden. We figured out

that if God created that man & did all the work to PLANT that GARDEN & SUPPLY all that both IT & the MAN needed, then God certainly was NOT the one who needed HELP with DRESSING or KEEPING that garden or with taking care of that man! But God CHOSE to CREATE that garden. God CHOSE to put that man IN that garden. God CHOSE to give that man the PRIVILEGE & RESPONSIBILITY to DRESS & KEEP that garden. And by the way, what are some of the things that God has given YOU to PROTECT & HEDGE IN & ATTEND & WATCH CAREFULLY in your life? Maybe it's certain people or a special job or a pet—even school! No matter what job or jobs God gives us the privilege to do, God will tell us how we are to KEEP those jobs! But BEFORE & ABOVE all these special jobs which the Lord gives us, there is one thing that ALL God's children should KEEP—hedge about, protect, guard, watch carefully over. Can you guess what that is? Read these next scriptures to find out:

"Blessed *are* they that keep (guard, protect) his testimonies (all the things which God gives us as proof or witness that He is real & His Word is true) *and that* seek him with the whole heart."

Psalm 119:2 KJB



"Thy word have I hid (to hide by covering over, to protect) in mine heart, that I might not sin against thee."

Psalm 119:11 KJB

"Jesus answered and said unto him, If a man love me, he will keep (guard, protect from losing) my words: and my Father will love him, and we will come unto him, and make our abode with him."

John 14:23 KJB

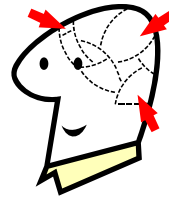
WHAT is it that God's children should KEEP & GUARD & PROTECT FROM LOSS? Unscramble the letters & write the correct answer on the lines.

G D O ' S   D W R O   G \_ \_ ' \_   W \_ R \_

And WHERE is it that God's children should KEEP GOD'S WORD & GUARD IT & PROTECT IT FROM LOSS? (Hint: Look back up into those scriptures. The answer ends with T& is underlined.) Write your answer on the lines in the next scripture:

God's children should KEEP GOD'S WORD & GUARD IT & PROTECT IT FROM LOSS & HIDE it in their \_ \_ \_ \_ t !

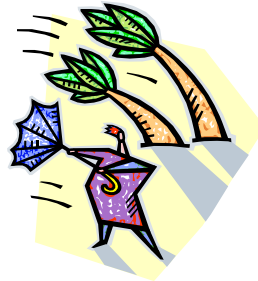
Now just so you don't get confused, most of the time when the bible speaks of our "heart" it is not speaking about the organ in our body that beats & pumps our blood. Most of the time the word "heart" in the bible refers to the place or center where we THINK— which is OUR MIND.



In fact, God says that our hearts— our minds— are like soil or ground where God wants to PLANT a GARDEN! Not a garden of flowers of course, but a GARDEN of all His Word & testimonies about Jesus Christ & His great salvation & love. Take a moment to read Matthew 13:18-31 & you'll see what we mean. And if YOU have believed God's Word that Jesus is your Savior, now God wants to get started right away planting more & more SEEDS OF HIS WORD & TRUTH in your soul & water them with His Word! (Lots of times God uses rain

& rivers to give us visual pictures of what His Word is like. See Deut 32:1-3, Ezekiel 1:24 & 43:2 for examples of this.) Why does God want to plant a garden of His Word in your soul? So that your MIND can grow strong like a big tree planted near a river with roots that go deep into the ground. When storms come, that tree might BEND & SWAY, but it will not fall! When the sun beats down, the leaves will not wither & die for the river will keep it well watered.

When you allow God's word to grow mightily in your mind—your soul, His WORD will PROTECT you from lies & getting discouraged when troubles come your way! Now why do we say that



you'll be like a TREE planted near a river with good strong roots when you fill your heart—God's garden in your mind—with His Word? Well, read what God says about the person who has his or her heart filled with God's Word & longs to obey it:

Psalm 1:2-3 KJB

"But his delight *is* in the law of the LORD; and in his law doth he meditate day and night.

And he shall be like a tree planted by the rivers of water, that bringeth forth his fruit in his season; his leaf also shall not wither and whatsoever he doeth shall prosper.

How is God's GARDEN in YOUR heart growing?

And now that we've mentioned that word GARDEN again. Here is something very interesting about that word GARDEN in Genesis 2. I looked

that word up & it refers to a “AN AREA THAT IS “FENCED IN or PROTECTED in some way”. The “root word” from which that word GARDEN in Genesis 2 comes means “to hedge about, to protect, to defend”! Don’t those definitions for that word GARDEN sound very much like the definitions for that word KEEP which was what the man was supposed to do when God placed him in that GARDEN—that PROTECTED AREA—THAT PLACE THAT WAS HEDGED IN?

And that word KEEP now brings us to a very important FACT! When God tells us that we are to do something, He will always tell us HOW we are to do it. He will always give us EVERYTHING we need to do it! And so, when God told that 1st man, Adam, to DRESS & KEEP that garden, God also gave that man very SPECIFIC INSTRUCTIONS on what to do! DRESSING the garden would be EASY work for the man, especially with the soil which God used to plant that garden. To dress the garden, the man simply had to TURN the soil every once in a while to prevent WEEDS from growing & to keep the soil getting plenty of air for the roots & water from the river that flowed into it. Dressing a garden is physical work. But what about KEEPING it? Protecting it? As we said, God always gives us specific instructions when He gives us a job to do. Let’s read God’s instructions to that 1st man, Adam, after he put him in the garden & gave him the responsibility to dress & keep it: Genesis 2:16-17



“And the LORD God commanded the man saying, Of every tree of the garden thou mayest freely eat:



But of the tree of the knowledge of good and evil, thou shalt not eat of it: for in the day that thou eatest thereof thou shalt surely die.”

The Lord God gave the man SPECIFIC INSTRUCTIONS to follow so that the man & that garden where God’s blessings were plentiful & perfect would be protected. The Lord God gave the man SPECIFIC INSTRUCTIONS to follow so that the man could continue to ENJOY His time & relationship with God in that garden WITHOUT TROUBLES! These instructions required THINKING & DECIDING rather than physical work like turning the soil. These instructions referred more to SPIRITUAL work – decisions we make in our mind about doing or not doing what God says. And then, as soon as God gave the man these commands, read what God said next: “And the LORD God said, *It is* not good that the man should be alone;” Genesis 12:18a KJB

Right after God gave the man His WORD—HIS INSTRUCTIONS, HIS COMMANDS about how the man was to keep or protect the garden, God said this: “It is not good that the man should be alone.”

And then the LORD God said this:  
I will make an help meet for him.”

Genesis 12:18b KJB

There it is! The very 1st time that we find the word HELP in the bible. And so we now see WHO it was in that God said should have HELP. It was the 1st man Adam. Can you guess WHAT the help was for & WHY the help would be needed. We’ll see some of this next week!

# GRACE CHRISTIAN FELLOWSHIP

Pastor John A. Ricci

## Sunday Morning Service

10:00 A.M.

Sunday Transportation Service ~ Call 24 hours Prior

## Weekly Services

Wednesday & Friday Evenings, 7:30 P.M.

## Prayer Meeting

Wednesday & Friday Evenings, 7:00-7:20 P.M.

## Communion Service

First Sunday of Every Month

## Children's Prep School (Ages 5-14) & Mother's Room

Available for Every Service

## Email

info@gracecfellowship.org

## Directions

### From I-95

- RI Exit #22; *Left* at split to **Rt. 6 W.**
- Take Killingly St (Rt. 128) Exit; *Right* off Exit.
- Take Killingly to end; *Right* on Manton Ave; cross bridge.
- Turn *Left* at light (CVS on corner), and then bear *Left* at the split. You are now on Woonasquatucket Ave.
- Go about 1 mi.
- **G.C.F.** is on the *Left*.

### From Rt. 146

- Mineral Spring Ave Exit in Providence.
- From **146 N** turn *Left* off Exit; from **146 S** turn *Right*.
- Take Mineral Spring to end and stay *Left* around the rotary (pass North Providence Town Hall).
- Take next *Right* onto Woonasquatucket Ave.
- Go about 1½ mi.
- **G.C.F.** is on the *Right*.



## Grace Christian Fellowship

232 Woonasquatucket Avenue, North Providence, RI 02911  
Tel 401.233.9671 • Fax 401.223.1292 • [www.GraceCFellowship.org](http://www.GraceCFellowship.org)