

How Can we Handle  
**BULLYING?**

Part 4

God Is  
**BIGGER**  
Than The Bullies!



**OUR DAILY BREAD**

Junior Edition

8-17-08



## **SOMETHING YOU MUST KNOW:**

God is perfect. He is Holy. We are all sinners. *For all have sinned, and come short of the glory of God.*

(Romans 3:23a KJB)

None of us could ever make ourselves perfect or holy to be accepted by God. But God loves us all so much, that He gave His only Son, the Lord Jesus Christ, to go to the cross and pay the penalty for our sins IN FULL, ONCE and FOR ALL. Jesus died and rose again. Because of the Lord Jesus Christ, God can now make us holy and acceptable to Himself. *For Christ also hath once suffered for sins, the just for the unjust, that he might bring us to God, being put to death in the flesh, but quickened by the Spirit.* (1 Peter 3:18 KJB)

Jesus Christ is our ONLY WAY to God and heaven.

*Jesus saith unto him, I am the way, the truth, and the life, no man cometh unto the Father, but by me.*

(John 14:6 KJB)

*Believe on the Lord Jesus Christ, and thou shalt be saved.* (Acts 16:31 KJB)

Without Jesus Christ, you can NEVER be accepted by God or go to heaven. When you believe in Jesus Christ as your Savior, God makes you His child. When you leave this world, you will spend all of eternity with Him! *But as many as received him to them gave he power to become the sons of God, even to them that believe on his name.* (John 1:12 KJB) While you are still here on earth, learn His beautiful Word. Believe it and obey it, so you can enjoy all God has done for you.

*Let the word of Christ dwell in you richly in all wisdom.*

(Colossians 3:16a KJB)

Before we begin our lesson about BULLIES today, we are going to talk just a little bit about



## SHADOWS!

When standing outside in the sunlight EVERYONE has a SHADOW! Here is ONE of the definitions my dictionary gave for the word SHADOW:

**“a darkened shape on a surface that falls behind somebody or something blocking the light”**

You learn lots of things when you use your DICTIONARY! There were lots of meanings given for just that one little word SHADOW. We’ll look at just a couple of them to help us learn something VERY IMPORTANT about GOD! After all, God is the One who made it possible for us to have SHADOWS by giving us THE SUN! And, in His Word, The Bible, God uses the word SHADOW to teach us something VERY IMPORTANT about Himself - something we should REMEMBER - especially when BULLIES are trying to BULLY us!

We all know from our experience with SHADOWS that shadows come in ALL SIZES! The SIZE of the shadow depends upon the SIZE of the person or building or mountain or tree or whatever it is that is casting a shadow. Now think about that for a moment as you read another “meaning” for the word SHADOW.

A shadow can be

**“an ever-present threat or blight”**

This means that sometimes SHADOWS - especially really huge dark ones - can be really scary! Well, when we find ourselves facing a BULLY, they can seem really HUGE to us!

When they BLOCK our way & tease us or THREATEN us with mean words, they sure do seem to cast a very



BIG DARK SHADOW  
in front of them!

We feel so small standing there in front of them - in the dark shadow of their threats!  
It's easy to be REAL SCARED OF THEM!  
But when that happens & you start to feel so

**SCARED,**

knowing ANOTHER MEANING for the word SHADOW might help you! A shadow can be SCARY; but a shadow can also be

“ something that provides protection”.

How can a shadow provide protection? Well, one example would be when on a hot day, the SHADOW of a big old tree can PROTECT our skin from burning in the HOT SUN! And THIS meaning of the word SHADOW that it can be “something that provides protection” is the meaning that helps us learn something VERY IMPORTANT about God. See if you can figure out what that VERY IMPORTANT FACT about God is by reading this PROMISE from God where God uses the word SHADOW to tell us something about Himself:

“He that dwelleth in the secret place of the most High shall abide under the shadow of the Almighty.

I will say to the LORD, *He is* my refuge and my fortress: my God; in him will I trust.

Surely he shall deliver thee from the snare of the fowler, and from the noisome pestilence

(Bullies sure can be SCARY NOISY PESTS who try to TRAP us into fear!)

He (The Lord) shall cover thee with his feathers, and under his wings shalt thou trust: his truth (knowing God's Word & promises) *shall be thy shield and buckler* (our protection against the bully)

Thou shalt not be afraid for the terror by night; *nor* for the arrow that flieth by day:

Nor for the pestilence (troubles, problems) *that* walketh in darkness, *nor* for the destruction *that* wasteth at noonday." Psalm 91:1-6

This Psalm tells us that those who know God's Word & believe Him & live their lives by what God says are the people who are living their lives IN HIS PROTECTIVE SHADOW! Even when BIG BULLIES try to cast their SHADOW OF FEAR over us, we can REMEMBER this Psalm that tells us that God has a SHADOW TOO! But His shadow is one of PROTECTION that can give us COURAGE & STRENGTH to handle the bullies & problems in our lives. And REMEMBER THIS! GOD IS BIGGER THAN THAT BULLY OR PROBLEM YOU MAY HAVE!

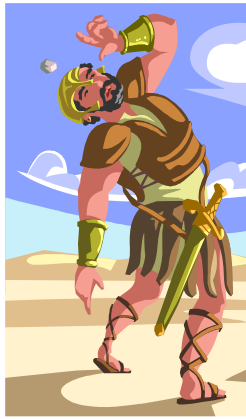
And like that tree's shadow that protects us from the harm that the sun's rays can do to our bodies, God's SHADOW of PROTECTION - His ALMIGHTY POWER & FAITHFULNESS - as we trust His promises each day is a LOT BIGGER than that bully's shadow of fear that he or she tries to cast on us with his or her loud, scary words! So the next time you see a SHADOW, remember that God is BIGGER & MORE POWERFUL than any BULLY who tries to CAST A BIG DARK SHADOW of FEAR over you. The next time you see a SHADOW, remember God's promise in Psalm 91 !



And now that brings us to continue our study on HOW CAN WE HANDLE BULLYING.. To-day we will meet a BULLY who really did cast a VERY BIG SHADOW. This BULLY was about

**9 FEET 9 INCHES TALL!**

Oh my! When this guy stood out in the sun, he sure did cast a MIGHTY BIG SCARY SHADOW!



His name was

**GOLIATH!**

Who was GOLIATH? Well let's see what our King James Bible tells us about GOLIATH!

"And there went out a champion out of the camp of the Philistines, named Goliath, of Gath, whose height *was* six cubits and a span."

1Samuel 17:4 KJB

What does that scripture tell us about GOLIATH? It tells us lots of things. Goliath was a CHAMPION! That means that he was an extremely STRONG & EXPERT fighter. That scripture tells us that Goliath lived in a city called Gath. It tells us that at this time though, Goliath was a soldier in the Philistine army and was with that army at their camp. It also tells us how HUGE Goliath was! Six cubits and a span is the ancient way of measuring. In our system

of measuring, 6 cubits (1 cubit = 18 inches.) & a span (1 span = 9 inches) is equal to **9 FEET 9 INCHES !**

That is how TALL Goliath was! Talk about  
**BIG, DARK SHADOWS!**

I sure wouldn't want to be facing a GOLIATH!

Now of course, people are not mean or bad just because they are TALL! Our height or weight has nothing to do with what kind of person we are. But it just so happens that Goliath was not very nice at all! And his height made him look

**REAL SCARY!**

It is important to know that Goliath was part of the Philistine army. Who were the Philistines? They were a nation of people who HATED God's people, Israel. They were really mean enemies of God's people. The Philistines had many armies. And at this time in 1Samuel 17, the Philistine armies had gathered together at a certain camp. The one army of Israel with their king, King Saul, gathered at another camp across from them. They were getting ready for a battle. Here is how they arranged themselves for battle:



"And the Philistines stood on a mountain on the one side, and Israel stood on a mountain on the other side: and



*there was a valley between them.*

1Samuel 17:3 KJB

Do you get the picture? And then while these armies were facing one another, each on a mountain,

### GOLIATH THE BULLY CAME FORWARD!

Here is what Goliath was wearing when he came forward:

“And *he had* an helmet of brass upon his head, and he *was* armed with a coat of mail (a flexible armor of metal plates that overlap): and the weight of the coat *was* five thousand shekels of brass. (1 shekel = .5 oz or 16 g. How much did his armor weigh?)

And *he had* greaves of brass (brass shin guards from his ankles to his knees) upon his legs, and a target (a javelin) of brass between his shoulders.

And the staff of his spear *was* like a weaver’s beam; and his spear’s head *weighed* six hundred shekels of iron: and one bearing a shield went before him.”

1Samuel 17:5-8 KJB

This HUGE MAN had on lots of STRONG HEAVY ARMOR to protect him. And not only that, he had another soldier standing in front of him with a shield! And here is what

Goliath, the huge champion of the Philistine army said to all the men of Israel who were gathered on the other mountain:

“And he stood and cried unto the armies of Israel, and said unto them, Why are ye come out to set *your* battle in array? *am* I not a Philistine,





and ye servants to Saul? choose you a man for you, and let him come down to me.

If he be able to fight with me, and to kill me, then will we be your servants: but if I prevail against him, and kill him, then shall ye be our servants, and serve us."

And the Philistine said, I defy the armies of Israel this day: give me a man, that we may fight together." 1Samuel 17:8-10 KJB

The Philistines sent this giant of a man out to challenge King Saul & Israel to send down ONE MAN from their army to FACE THIS BULLY, GOLIATH who by his SIZE & MEAN WORDS tried to SCARE the people of God & make them feel SMALL, WEAK & HELPLESS! That's is what ALL BULLIES try to do! Well that is EXACTLY what the bully Goliath did to King Saul & God's army - Israel.



"When Saul and all Israel heard those words of the Philistine, they were dismayed, and greatly afraid."

1Samuel 17:11 KJB

King Saul & God's people felt DISMAYED! That means they were "filled with alarm", feeling HOPELESS & HELPLESS! And they were GREATLY AFRAID! The bully Goliath had cast a HUGE SHADOW OF FEAR over God's people! What would YOU do at a time like that? We hope you would remember

**GOD'S SHADOW INSTEAD in Psalm 91!**  
JOIN US NEXT WEEK TO FIND OUT WHAT HAPPENED NEXT!

# GRACE CHRISTIAN FELLOWSHIP

Pastor John A. Ricci

## Sunday Morning Service

10:00 A.M.

Sunday Transportation Service ~ Call 24 hours Prior

## Weekly Services

Wednesday & Friday Evenings, 7:30 P.M.

## Prayer Meeting

Wednesday & Friday Evenings, 7:00-7:20 P.M.

## Communion Service

First Sunday of Every Month

## Children's Prep School (Ages 5-14) & Mother's Room

Available for Every Service

## Email

info@gracecfellowship.org

## Directions

### From I-95

- RI Exit #22; *Left* at split to **Rt. 6 W.**
- Take Killingly St (Rt. 128) Exit; *Right* off Exit.
- Take Killingly to end; *Right* on Manton Ave; cross bridge.
- Turn *Left* at light (CVS on corner), and then bear *Left* at the split. You are now on Woonasquatucket Ave.
- Go about 1 mi.
- **G.C.F.** is on the *Left*.

### From Rt. 146

- Mineral Spring Ave Exit in Providence.
- From **146 N** turn *Left* off Exit; from **146 S** turn *Right*.
- Take Mineral Spring to end and stay *Left* around the rotary (pass North Providence Town Hall).
- Take next *Right* onto Woonasquatucket Ave.
- Go about 1½ mi.
- **G.C.F.** is on the *Right*.



## Grace Christian Fellowship

232 Woonasquatucket Avenue, North Providence, RI 02911  
Tel 401.233.9671 • Fax 401.223.1292 • [www.GraceCFellowship.org](http://www.GraceCFellowship.org)